

### FEATURES

- Compact pilot boxes with direct operated, integrated pilot valves
- Especially designed for the remote control of diaphragm pulse valves (series 353)
- Valve seats are integrated in base plate
- Common exhaust connection for just 1 or 2 (G 3/8") silencers
- Built-in heating elements for trouble free operation at low ambient temperatures
- Degree of protection: IP 65
- Facilities for integrated quick fittings

### GENERAL

**Differential pressure** 0 to 8,5 bar [1 bar = 100kPa]  
**Maximum allowable pressure** 20 bar  
**Response times** 5 - 25 ms

fluids	temperature range	sealings
air, inert gas	-20 to +80°C	NBR (nitrile)

### CONSTRUCTION

**Base-plate** Anodised aluminium  
**Cover** ABS (polystyrene) UV stabilised  
**Core tube** Brass  
**Core and plugnut** Stainless steel  
**Spring** Stainless steel  
**Disc** NBR  
**Shading coil** Copper  
**Coil insulation class** F  
**Electrical connection** Spades according to DIN 46244

### ELECTRICAL CHARACTERISTICS

**Standard voltages** DC (=): 24V  
(Other voltages and 60 Hz on request) AC (~): 24V - 115V - 230V / 50 Hz

coil type	nominal power ratings (1)				ambient temperature range (2) (°C)	protection
	inrush ~	holding ~		hot/cold =		
	(VA)	(VA)	(W)	(W)		
UCM22-FT	20,4	14	10	15 / 22	0 to +50	moulded

### SPECIFICATIONS

pipe size	orifice size	flow coefficient Kv		operating pressure differential (bar)		number of pilot valves	catalogue number for the boxes		
				min.	maximum		without heating	1 heating element (2)(3)	2 heating elements (2)(3)
					air/inert gas ~/=				
(G)	(mm)	(m³/h)	(l/min)						
1/8	3,6	0,35	5,8	0	8,5	2	SG110A020	SG110A021	-
						3	SG110A030	SG110A031	-
						4	SG110A040	SG110A041	-
						5	SG110A050	SG110A051	-
						6	SG110A060	SG110A061	-
						7	SG110A070	SG110A071	SG110A072
						8	SG110A080	SG110A081	SG110A082
						9	SG110A090	SG110A091	SG110A092
						10	SG110A100	SG110A101	SG110A102
						11	SG110A110	SG110A111	SG110A112
						12	SG110A120	SG110A121	SG110A122

(1) Heating element rating 80 watt each.

(2) Minimum ambient temperature without heating elements: 0°C

Minimum ambient temperature with one heating element: -40°C (2 to 6 pilots)

: -15°C (7 to 12 pilots)

Minimum ambient temperature with 2 heating elements: -40°C (7 to 12 pilots)

(3) Heating element(s) 220V/50Hz, for other voltages see ordering information

### OPTIONS

- Pilot boxes with metal cover for harsh conditions and heavy duty applications (prefix: **WP**)
- Integrated quick fittings for 6 or 8 mm tubes
- Special customer adapted executions

### INSTALLATION

- The pilot boxes can be mounted in any position without affecting operation
- Pipe connections are: G 1/8 according to ISO 228/1 for pilot connection  
G 3/8 according to ISO 228/1 for common exhaust
- Cable entries: control cable on box with 2 - 6 pilots valves : PG16  
control cable on box with 7 - 12 pilots valves : PG21  
connection cable heating element : PG11
- Installation/maintenance instructions are included with each pilot box
- Spare Parts Kit and replacement coils are available (see section 11)

### DIMENSIONS (mm), WEIGHT (kg)



### ORDERING INFORMATION

**(WP) S G110 A 12 0 230/50**

**Volts/ Hz**

**Optional execution**

- 0 = standard
- 1 = 1 heating element  
230V/50Hz
- 2 = 2 heating elements  
230V/50Hz
- 3 = 1 heating element  
24V =
- 4 = 2 heating elements  
24V =
- 5 = 1 heating element  
115V/50Hz
- 6 = 2 heating elements  
115V/50Hz

**Number of pilots**

- 02 = 2 pilot valves
- 03 = 3 pilot valves etc. (max. 12)

**Change letter**

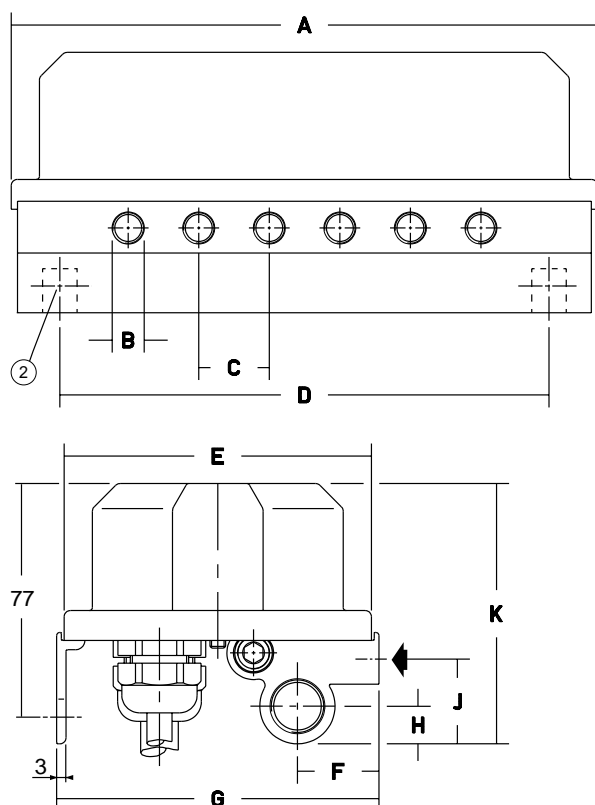
**Basic number**

- G110 = threaded ports
- G120 = 6 mm quick fitting
- G130 = 8 mm quick fitting

Electrical connection  
spade terminals A 6,3 x 0,8

Prefix (optional)

**WP** : Waterproof IP 65 metal  
enclosure and cover



number of pilot valves	A	B	C	D	E	F	G	H	J	K	weight (1)
2 to 6	187	G 1/8	22,5	156	98	26	103	12	27	83	1
7 to 12	322	G 1/8	22,5	266	98	26	103	12	27	83	2,2

(1) incl. coil and connector

(2) mounting: 2 holes Ø10 with pitch D